



PROFESSORSHIP
WORKBOOK

EDUCATIONAL PROGRAM

CURSO 2015-2016

PROFESSIONAL TRAINING - PROGRAM

‘The black forest’

‘De Altamira a Rothko’



Museo Universidad de Navarra



BASIC PROFESSIONAL TRAINING

In accordance with Real Decreto 127/2014 and OF 53/2015, this educational program intends to help to achieve the objectives of the Unit I and the Unit II of Communication and Society. In the end, it intends to help to guarantee the following Learning outcomes and achieve the following evaluation criteria:

- Assessing the historical evolution of prehistoric societies and Antiquity, and its relation with natural landscape. Analyzing the factors and elements involved and developing attitudes and values of appreciation toward the artistic and natural heritage.
- Using communicative strategies in order to interpret and communicate oral information in Spanish, applying the principles of active listening, simple strategies of composition and basic language rules.

CONTENTS

The program covers subjects such as:

- History of art
- Art as human expression in time and space: meaning of the art work
- Piece of art in its historical context. Social function of art through time: artists, patrons and clients.
- Application of a method of analysis and interpretation of significant art works in relation with outstanding styles and artists.
- Evolution of the European art in medieval and modern times. Basic guidelines for the commentary of pictorial works.
- Break with tradition: art during the first half of the XX century.
- Cooperative work
- Nonverbal communication

OBJECTIVES

The program intends to help achieving the following objectives:

- Developing the learners' personality, boosting the capacity to understand the environment and to learn the required knowledge about materials, methods and techniques, indispensable to guarantee the correct expression of their visual thinking and sensitivity.
- Encouraging the development of artistic sensitivity and creativity, incorporating expressive and subjective intentions to the drawing, providing procedural resources by contributing not to an only specific training but also to a global personal improvement.
- Boosting the development of critical reasoning before artistic visual and social reality. Helping to know how to see to understand and how to do to express oneself, in order to communicate, producing, creating and improving the knowledge of reality and of other people.
- Boosting observation skills and enjoying artistic expressions thanks to a detailed analysis of archetypal artistic productions, and enjoying their aesthetic and thematic values.

5

SKILLS

- Communication
- Knowledge and interaction with the physical environment
- process of the information and digital abilities
- Citizen and social
- artistic and cultural
- personal initiative and autonomy
- learn how to think



Program 1

THE BLACK FOREST

(From the Tapies's cube to the Manglano-Ovalle's)
September-October

Activities

Pre-Visit: in the educative centre: will be exhibited: Tapies's cube and the Manglano-Ovalle's. They will be told about the Cube, the wood, the deforestation, outside-inside, to look, to imagine, etc. Open questions will be asked so they can keep being interrogatives.

Visit: Visit to the exhibition (Tapies and Manglano-Ovalle) Artistic personal creation about what the cubes suggest to them, Japan, architecture, house, deforestation, and the Carbon Footprint.

Construction of a volumetric layout, in team, with the example of the cube.

Post-visit: The cubes' artworks are valued, and there will be a debate about what intended the exhibition. Questions will be answered. There are no solutions, but the artist will respond in his own way or will talk with them.

Program 2

FROM ALTAMIRA TO ROTHKO

(From the Tapies's cube to the Manglano-Ovalle's)

September-October

Activities

Pre-visit: They re welcomed to go to the Museum. They watch the video and are told about the intention of the program.

Visit: 30 minutes. Guided tour of the main collection.

Workshops: 1 hour. They split into teams in the workshops and are given sheets about 10 paintings. They have to work together in order to produce a creation about them. They have to explain their intention and develop a collaborative piece of art. In 1 hour they have to realize a sketch of their production.

Post-visit: Then, they go back to the educational center to see all of their works. There is a shared exhibition of the 10 pieces of art.



Schedule:

From 10 a.m. to 5 p.m.

Methodology:

Interdisciplinary working draft. Experiential education: playful, active, participative and cooperative.

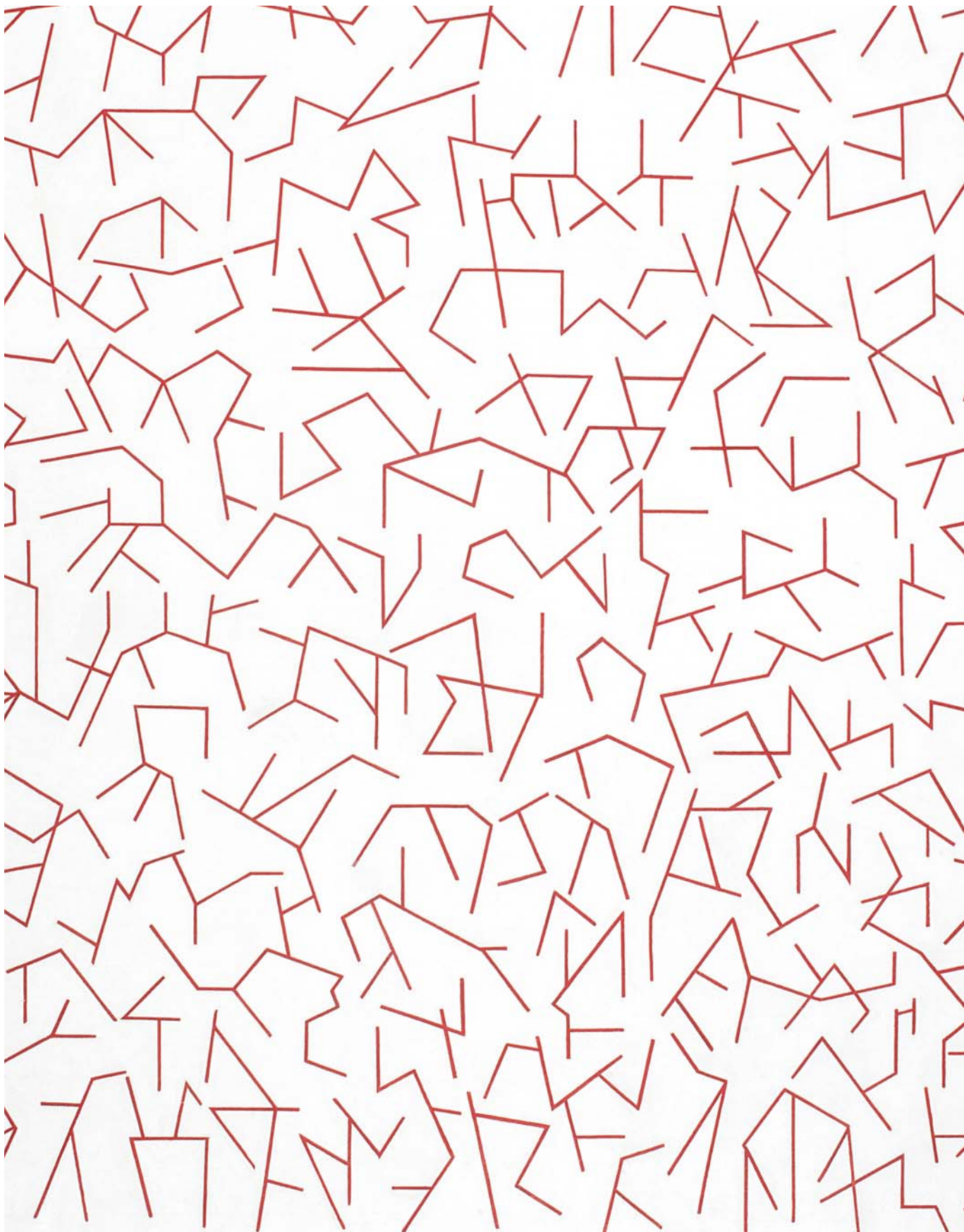
Minimum group size:

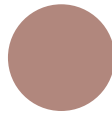
The minimum group size will be 20 persons

Evaluation

The evaluation will be done by direct observation, especially about:

- The involvement in the activities.
- The communication and expression through the different artistic languages .
- The products generated, in accordance with the evaluation standards of the different areas of the program.
- Interdisciplinary vision, through its integration in the products generated.
- Team-work.





Inscripciones:
T. 948 42 57 00
educacionmuseo@unav.es

CAMPUS UNIVERSITARIO. 31009. PAMPLONA
TEL. +34 948 42 56 00
GPS: 42°-48'-4" N Y 1°-39'-38" W
<http://museo.unav.edu>

