

TECHNICAL SPECIFICATIONS FOR VISITING THEATRE COMPANIES

THEATRE

GENERAL MASUREMENTS

WIDTH OF STAGE OPENING	14,26 m.
HEIGHT OF STAGE OPENING	07,00 m.
FORESTAGE	01,73 m.
DEPTH OF STAGE	09,64 m.
WIDTH OF STAGE	21,45 m.
HEIGHT OF GRID	14,81 m.

The Navarra University Museum Theatre is a theatre with Italian-style black masking draperies. It has a backstage area, which communicates with the stage by means of an arch, and this arch can be closed with a sliding door. There is an orchestra pit. The wings are not connected and, moreover, the left-hand wing is small.

LIGHTING

Characteristics

The regulated electrical circuits are distributed in the area of the stage, and on the frontal bridge and lateral bars located in the stalls (4.50 m from the floor of the stalls). A circuit distribution plan is available for this theatre.

There are also various DMX and Ethernet power points, distributed at different points. The equipment also includes 12 variable-speed motorised fly sets. There is a front bridge, along with two lateral bars in the area near the boxes (see attached plan) for lighting.

Motorised fly set number 3 is not used, since it is fixed to a projection screen (the bottom of the screen is 7.80 m from the floor of the stage).

The lighting controls are located in a box opposite the stage. This box has good visibility and an intercom connecting it with the stage and other areas of the theatre.

Control: ETC ELEMENT 2

Regulation: This space has 204 LSC EKO circuits, distributed as follows: 168 on the stage, 12 in the backstage area and 24 on the bridge and boxes. Moreover, 48 circuits are switch/no switch (trupower).

Equipment.

Light projectors:

14 PC RVE SERENITY EVO PC10 1000 w.
04 FRESNEL EVO 2 F10 1.000 w.
10 ETC SOURCE FOUR ZOOM PROFILES 750 w. 15 – 30°
04 ETC SOURCE FOUR ZOOM PROFILES 750 w. 25 – 50°
05 RVE Z20 PROFILES 2000 w.
46 PAR64 (CP60, CP61, CP62)
14 ARTHEA ASYMETRIC CYCLORAMA 1.000 w.

Accessories

06 Gobo holders for ETC SOURCE FOUR ZOOM PROFILE
07 Gobo holders for RVE Z20 PROFILE 2000 w.
06 Iris for ETC PROFILE 750 w.
04 Iris for RVE Z 20 PROFILE 2000 w.
14 Barndoors for PC RVE
04 Barndoors for FRESNE EVO 2 F10
08 Lighting ladders - 325 cm high.

Observations

All the light projectors have security chains and filter holders.

SOUND

Characteristics

The sound controls are located opposite the stage. These controls have good visibility and an intercom with the stage and other areas of the theatre.

The sound box is closed and only one central window can be opened. The stage has 16 ways of audio for microphone lines and 8 returns with which to send to monitors.

Control: YAMAHA LS9-16 Desk

Equipment:

02 Directional Line Array RCF TTL11A-H
02 Directional Line Array RCF TTL11A-B
02 Subwoofer RCF TTS26-A
16 Full Range RCF M502
03 Stereo Amplifiers RCF HPS1500
04 Monitors RCF TT08A 750 W
01 Blu Ray player

01 Dual CD/MP3 Numark Audio players
03 SHURE lapel mics
03 SHURE SM 58 mics
06 KONIG and MELLER adjustable mic stands

MACHINERY

Characteristics

The grid is in the Italian style and has two variable-speed motorised fly bars, which are distributed for lighting use and that of machinery (see attached plan).

The curtains of the black masking draperies are located in 3-metre wide independent manual fly sets. The theatre has a complete set of black masking draperies composed of 8 curtains of 8.50 x 3.00 m, 4 borders of 17 m x 2.50 m and one backdrop, which is split in two.

The theatre's cyclorama is mid grey.

This theatre has a backstage area, which is reached by means of a door that can be closed in order to leave it completely isolated from the stage.

This theatre has a blue velvet safety curtain that can be raised and lowered either manually or mechanically.

The stage opening has a blue velvet main border located on a hemp batten and two harlequins that allow the stage opening to be reduced from 14 metres to 10 metres.

The theatre has a two-level orchestra pit, with a capacity for 65 musicians.

The first two rows of seating in the stalls are located in the orchestra pit and form part of the theatre's official capacity and tickets are, therefore, sold for these seats unless in the case of previously notified technical or artistic requirements.

Any changes to seating arrangements must be notified to and approved by the theatre before the seats are put up for sale to the public.

The scenery or technical elements shall under no circumstances impede the evacuation plan or the security measures for the public and the theatre's official staff.

DRESSING ROOMS

Basement 1

3 dressing rooms, each with the capacity for 1 person.
2 dressing rooms, each with the capacity for 15 people.

Wardrobe

Located on the ground floor, it comprises two rooms, one for the wardrobe and another for the laundry, which contains a washing machine and a tumble-dryer.

LOADING AND UNLOADING

The loading and unloading bay is located at the back of the theatre, and lorries have direct access to the goods lift. The dimensions of the loading-bay door are 1.80 m x 2.30 m, while those of the goods lift are 3.00 m x 2.00 m.

CLEANING

Cleaning takes place one hour before performances commence.

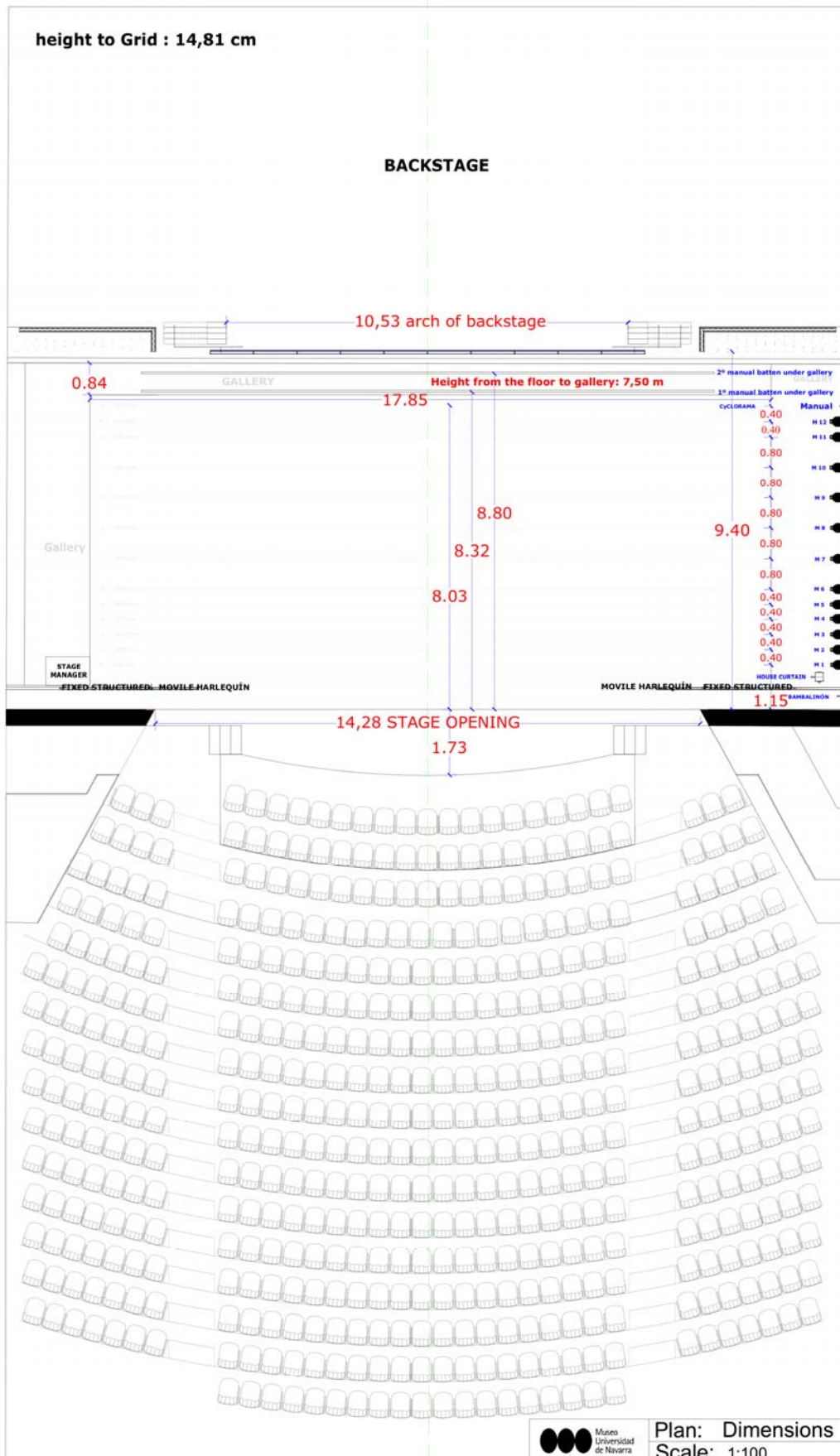
OBSERVATIONS

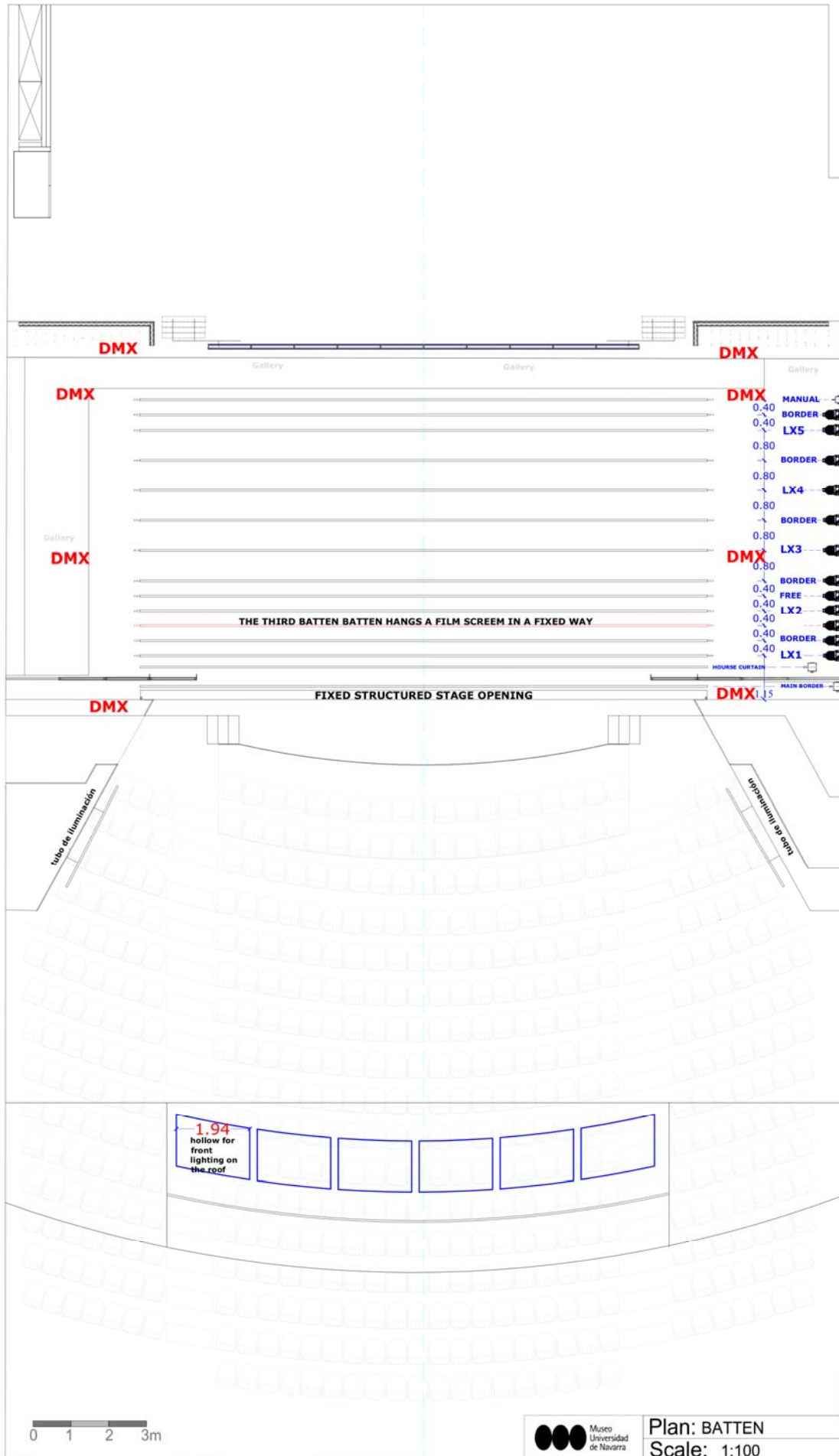
Any possible modifications to these technical specifications may take place only after consultation with and the approval of the Technical Management of the Navarra University Museum Theatre.

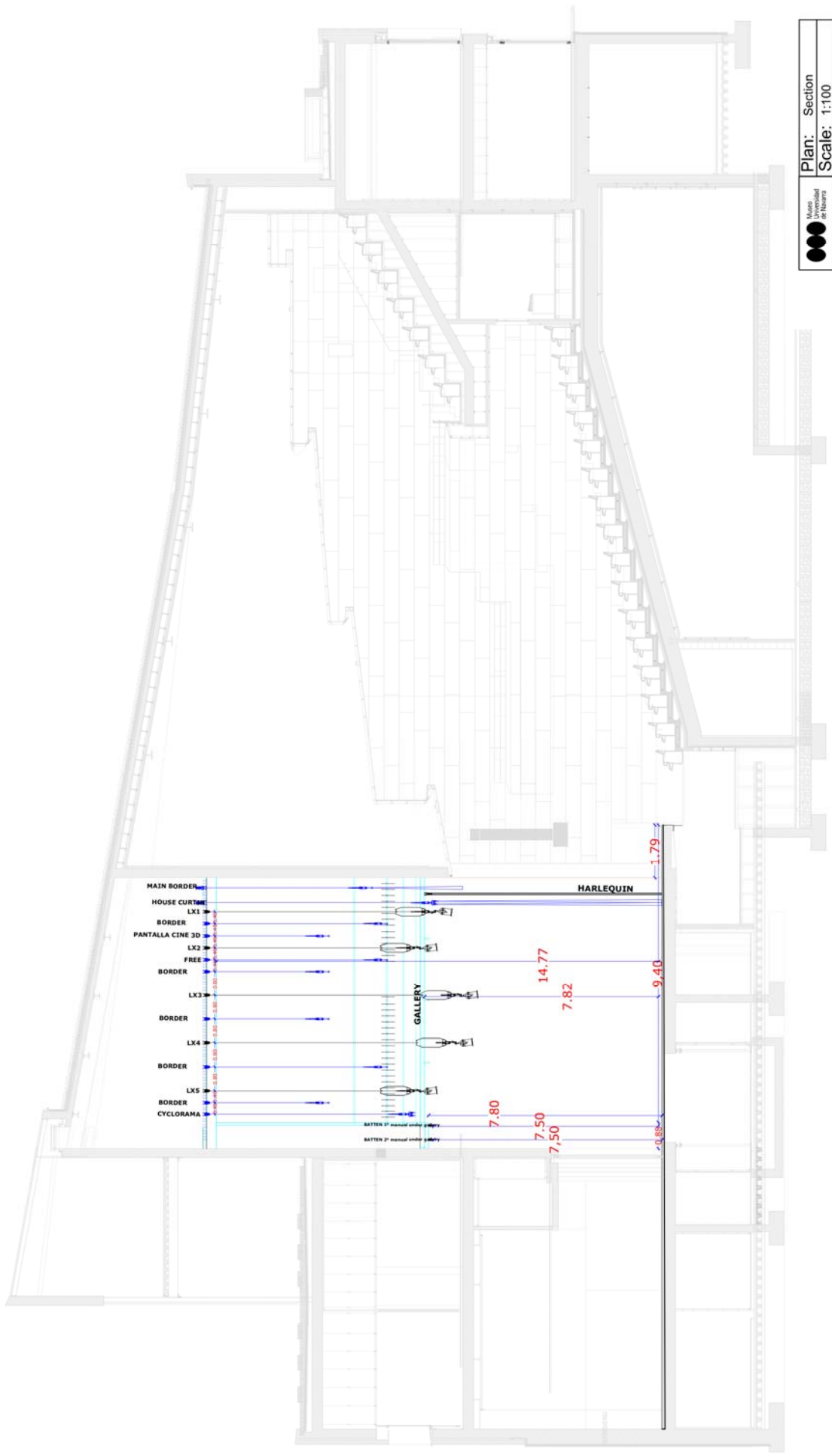
PHOTOGRAPHS



PLAN







Museo Universidad de Navarra
Plan: Section
Scale: 1:100